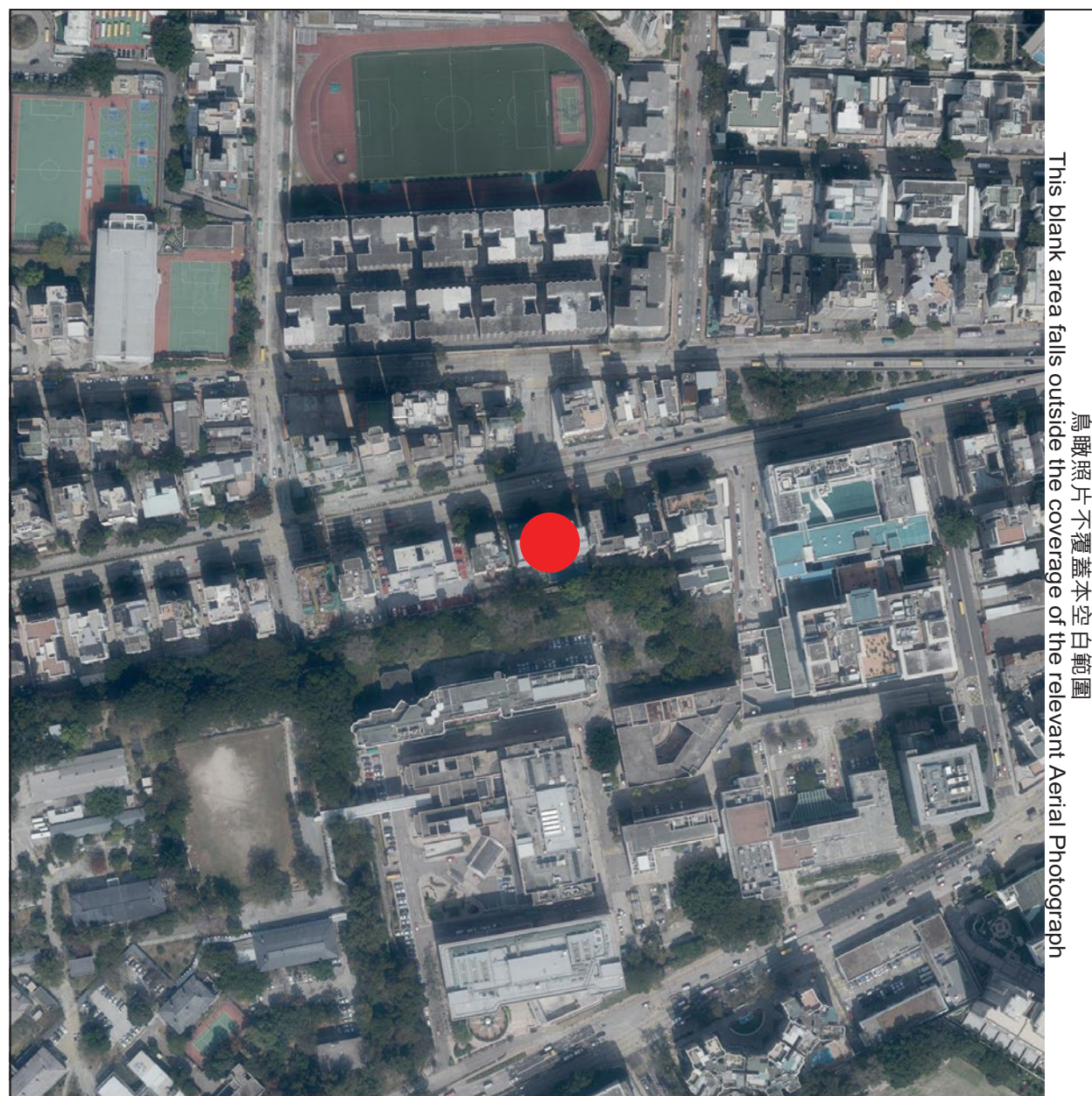



發展項目的鳥瞰照片 AERIAL PHOTOGRAPH OF THE DEVELOPMENT



This blank area falls outside the coverage of the relevant Aerial Photograph
鳥瞰照片不覆蓋空白範圍



香港特別行政區政府地政總署測繪處
版權所有 未經不可 不得複製
Survey and Mapping Office, Lands Department, The Government of HKSAR
© Copyright reserved - reproduction by permission only

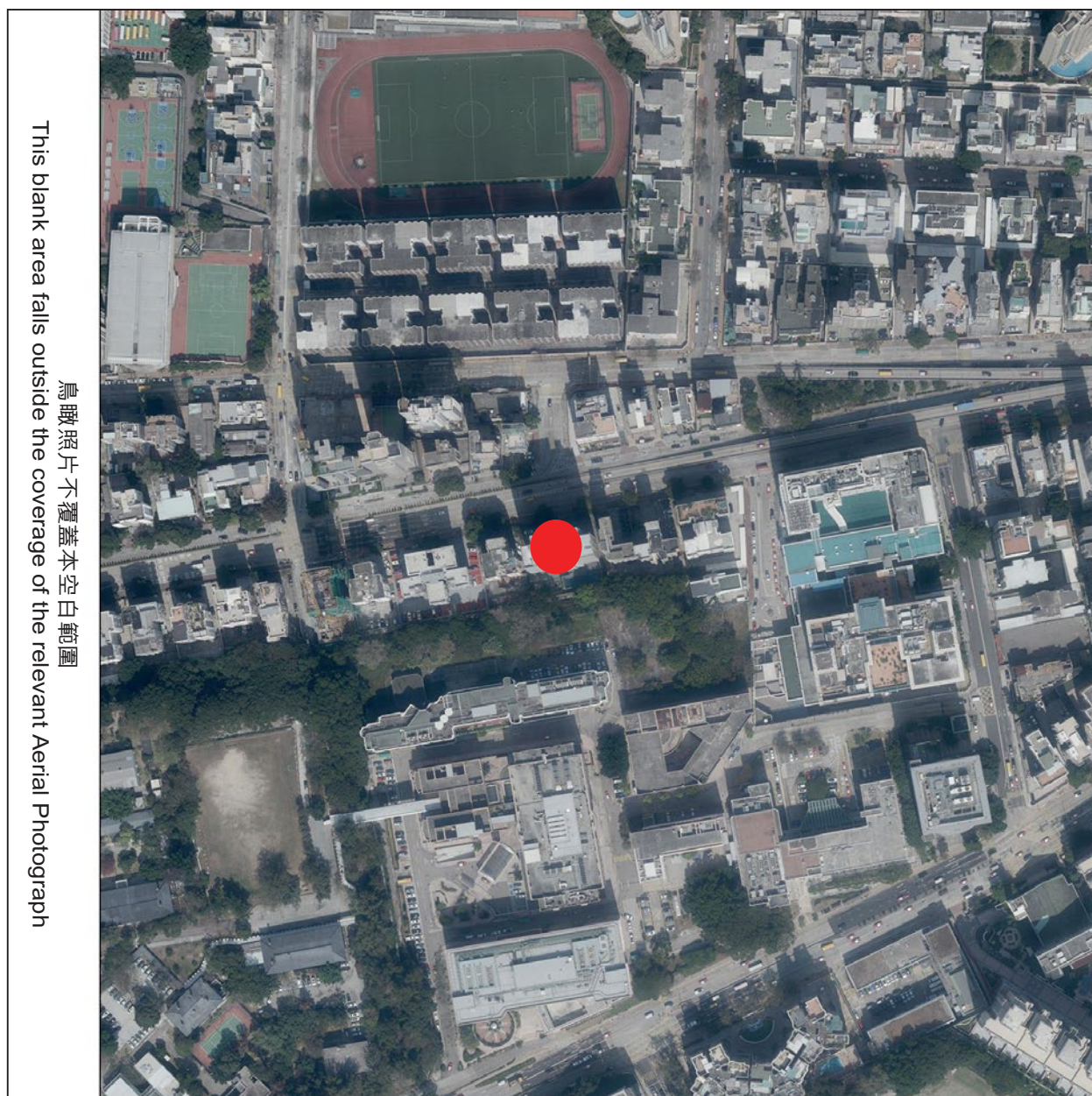
 發展項目位置
Location of the Development


摘錄自地政總署測繪處於 2017 年 2 月 13 日在 6,900 呎飛行高度拍攝之鳥瞰照片，編號為 E014342C。

Adopted from part of the aerial photo taken by Survey and Mapping Office of Lands Department at a flying height 6,900 feet. Photo No. E014342C, dated 13th February 2017.

備註：因技術性問題，此鳥瞰照片所顯示的範圍可能超過條例的規定。
Note: Due to the technical reasons that the boundary of the development is irregular, this aerial photograph may show more than the area required under the Residential Properties (First-hand sales) Ordinance.

發展項目的鳥瞰照片 AERIAL PHOTOGRAPH OF THE DEVELOPMENT



 發展項目位置
Location of the Development

摘錄自地政總署測繪處於 2017 年 2 月 13 日在 6,900 呎飛行高度拍攝之鳥瞰照片，編號為 E014341C。

Adopted from part of the aerial photo taken by Survey and Mapping Office of Lands Department at a flying height 6,900 feet. Photo No. E014341C, dated 13th February 2017.

備註：因技術性問題，此鳥瞰照片所顯示的範圍可能超過條例的規定。

Note: Due to the technical reasons that the boundary of the development is irregular, this aerial photograph may show more than the area required under the Residential Properties (First-hand sales) Ordinance.



香港特別行政區政府地政總署測繪處

版權所有 未經不可 不得複製

Survey and Mapping Office, Lands Department, The Government of HKSAR

© Copyright reserved - reproduction by permission only